



# WINDOWS

## BYOD ENROLMENT GUIDE

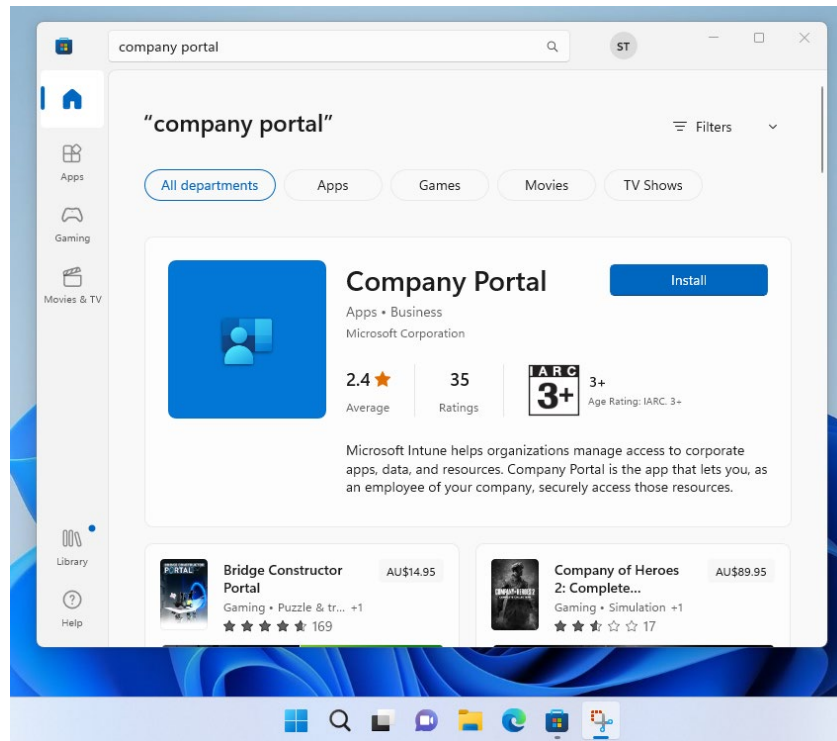
**If this is your first time enrolling, you must return A signed copy of the E-Learning & ICT policy to the front office or IT office before completing these steps.**

1. Open the Microsoft Store from the Windows Taskbar





## 2. Search for **Company Portal**.



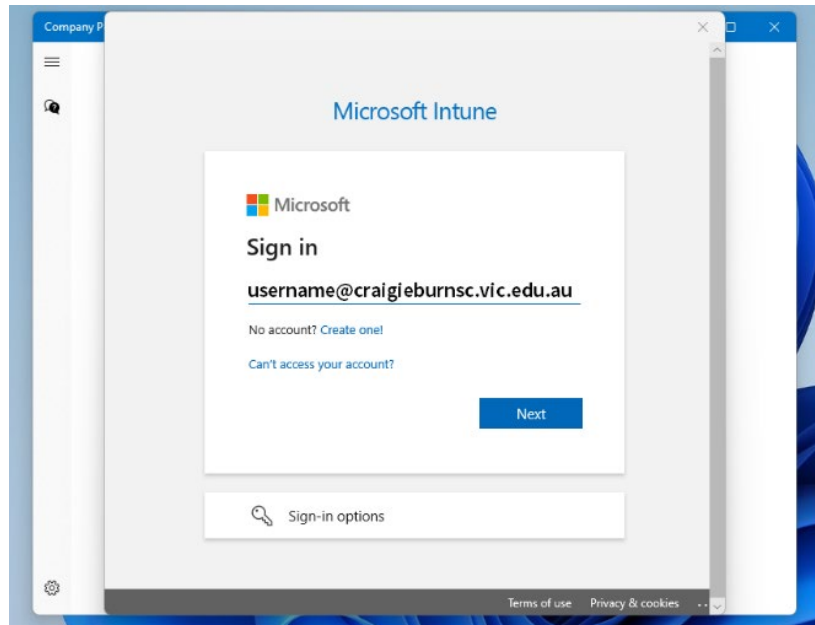
## 3. Select the install button. Wait for the app to install.



# Craigieburn Secondary College

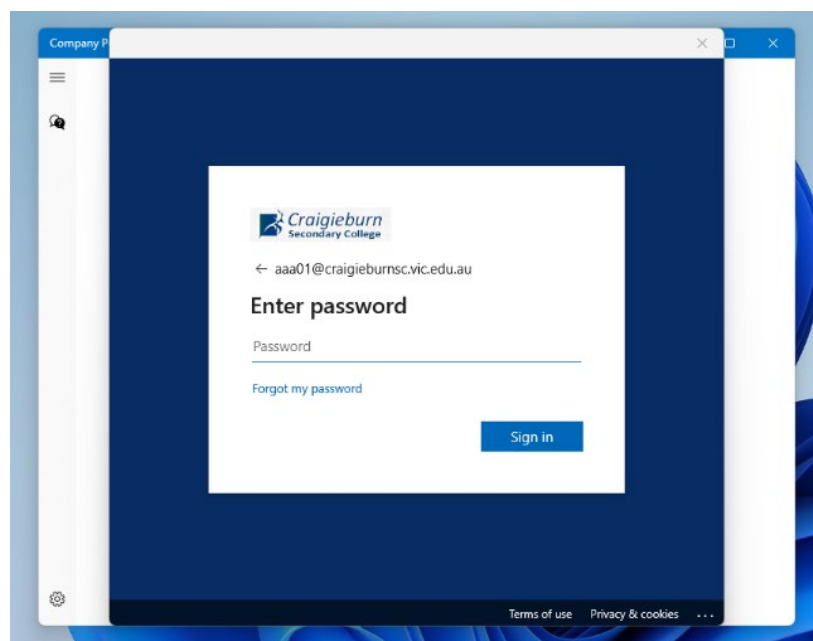
RESPECT BELONGING GROWTH and UNDERSTANDING

4. Open the company portal app.  
You will see the login screen.



5. Enter your school email address, select next.

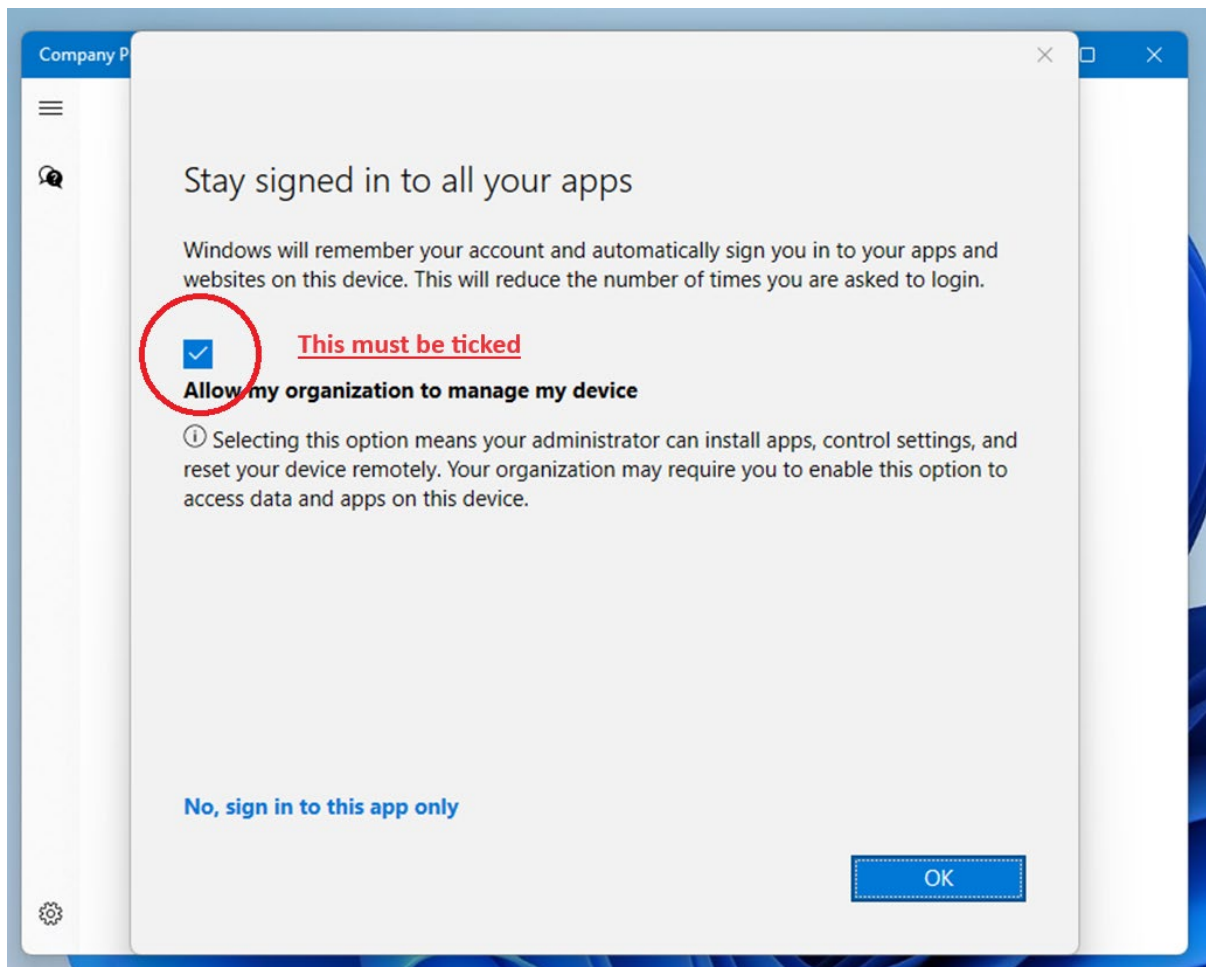
Example Email: [username@craigieburnsc.vic.edu.au](mailto:username@craigieburnsc.vic.edu.au)



**NOTE:** If the password page does not have the school logo like above you have entered the wrong email address.



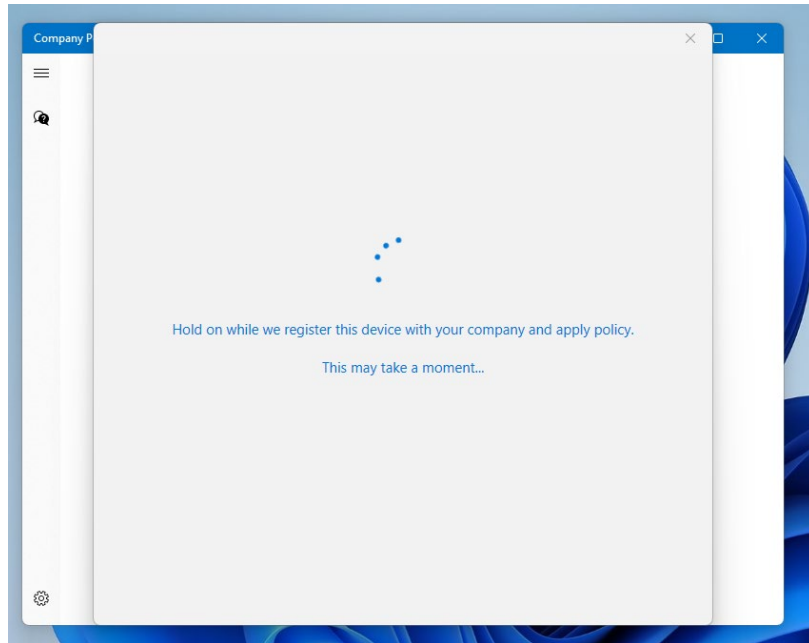
6. On next page ensure **Allow my organisation to manage my device** is ticked and click ok.





# Craigieburn Secondary College

RESPECT BELONGING GROWTH and UNDERSTANDING



Wait for enrolment to finish.

Once enrolment is completed you will be presented a window stating  
**You're all set!**

**Now you are enrolled into Craigieburn Secondary College's BYOD program.**

We must import your data manually, we do this Monday, Wednesday & Friday mornings.

Once your details have been uploaded you will be able to connect.

Please read the below information.

The school wifi network is called **eduSTAR\_A**

**Enter your school username and password into the username and password boxes to login to school wifi.**