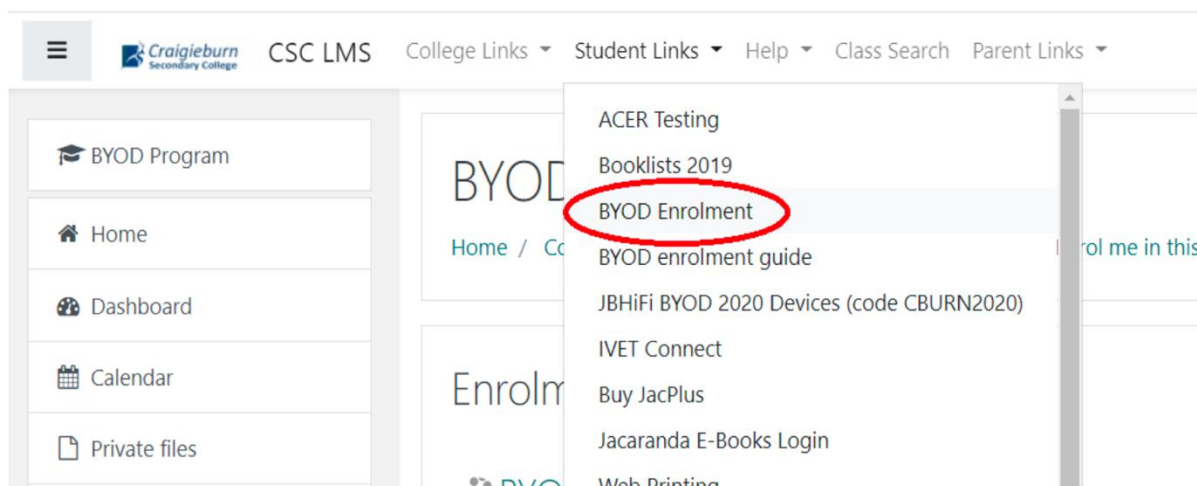




MAC BYOD ENROLMENT GUIDE

If this is your first time enrolling, you must return A signed copy of the E-Learning & ICT policy to the front office or IT office before completing these steps.

1. Open <https://lms.craigieburnsc.vic.edu.au/> in a browser on your BYOD laptop.
2. Click on 'Student Links' and click 'BYOD Enrolment'.





3. Download the file “Microsoft Company Portal” this is an apple application used to install Microsoft Company Portal

Student BYOD Program Enrolment

[Course](#) [Settings](#) [Participants](#) [Grades](#) [Reports](#) [More ▼](#)

▼ BYOD Enrolment Guides

[Collapse all](#)

Select the guide from below for your type of computer Windows 11 or Apple Mac.



BYOD Enrolment Guide Windows 11

[Mark as done](#)



BYOD Enrolment Guide Apple MAC

[Mark as done](#)

▼ Apple Intune Application

You will need these files if you have an apple mac computer.



Microsoft Company Portal

[Mark as done](#)

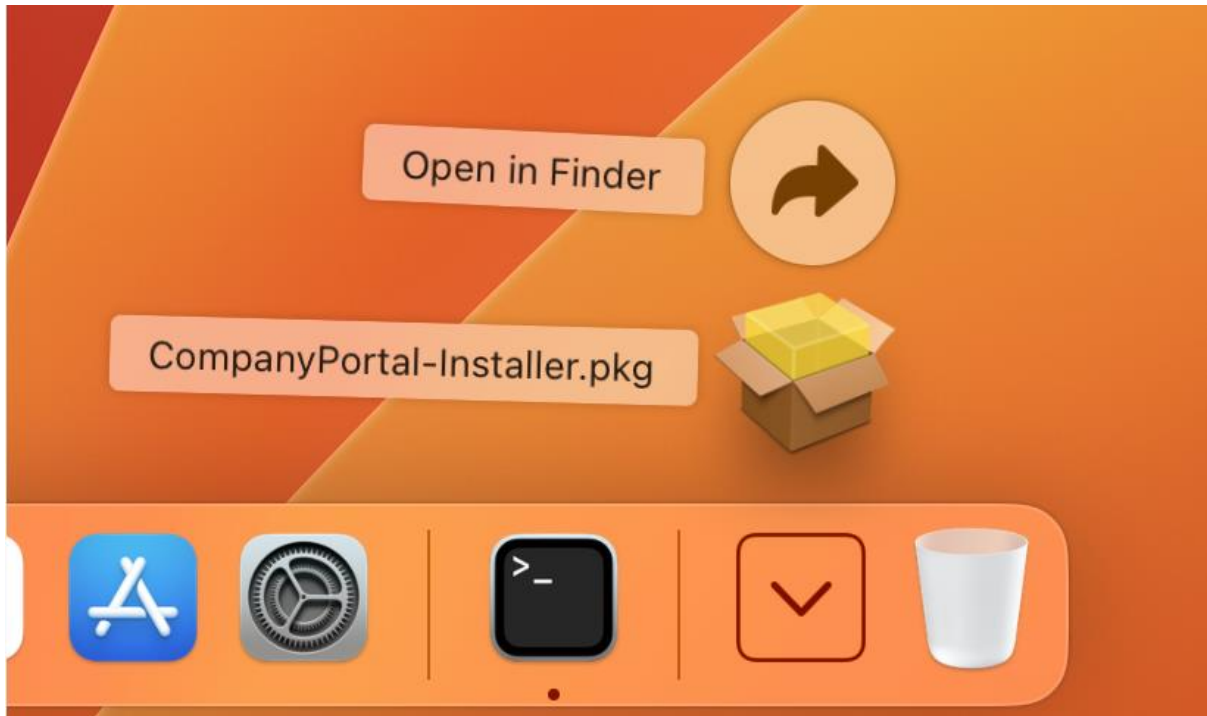


Apple Proxy Settings

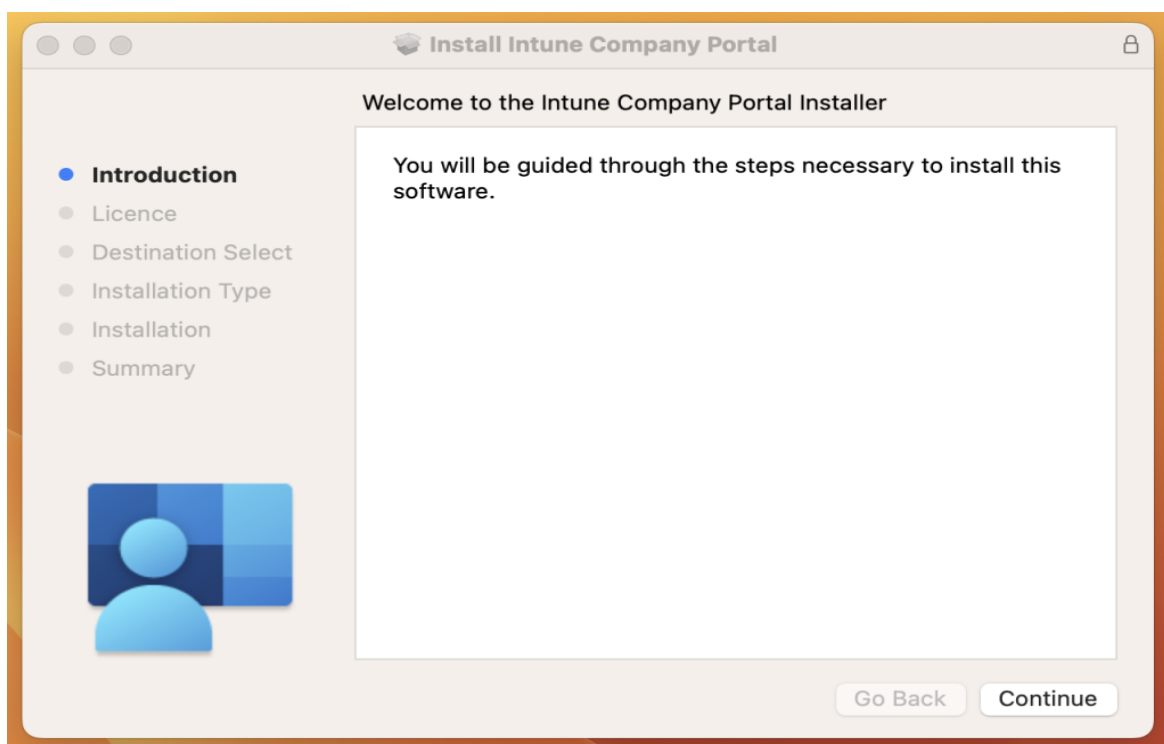
[Mark as done](#)



4. Once downloaded, navigate to your downloads icon on your dock, click it and click '**CompanyPortal-Installer.pkg**'.

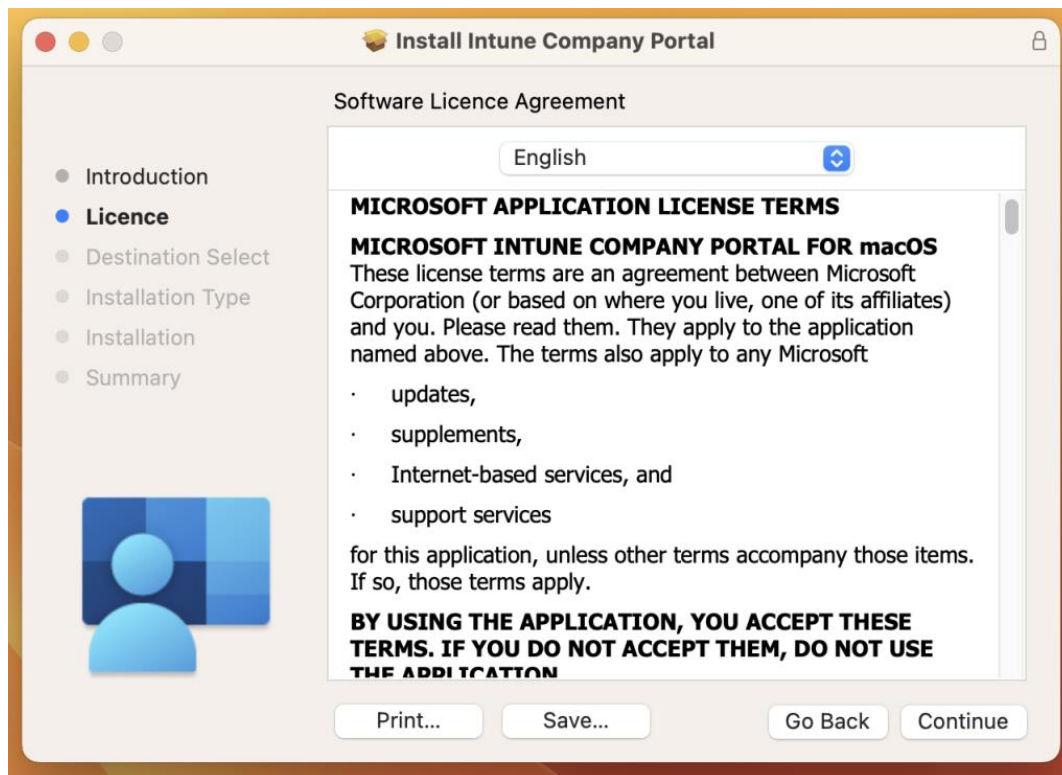


5. Once **opened**, select **continue** on the following screen.

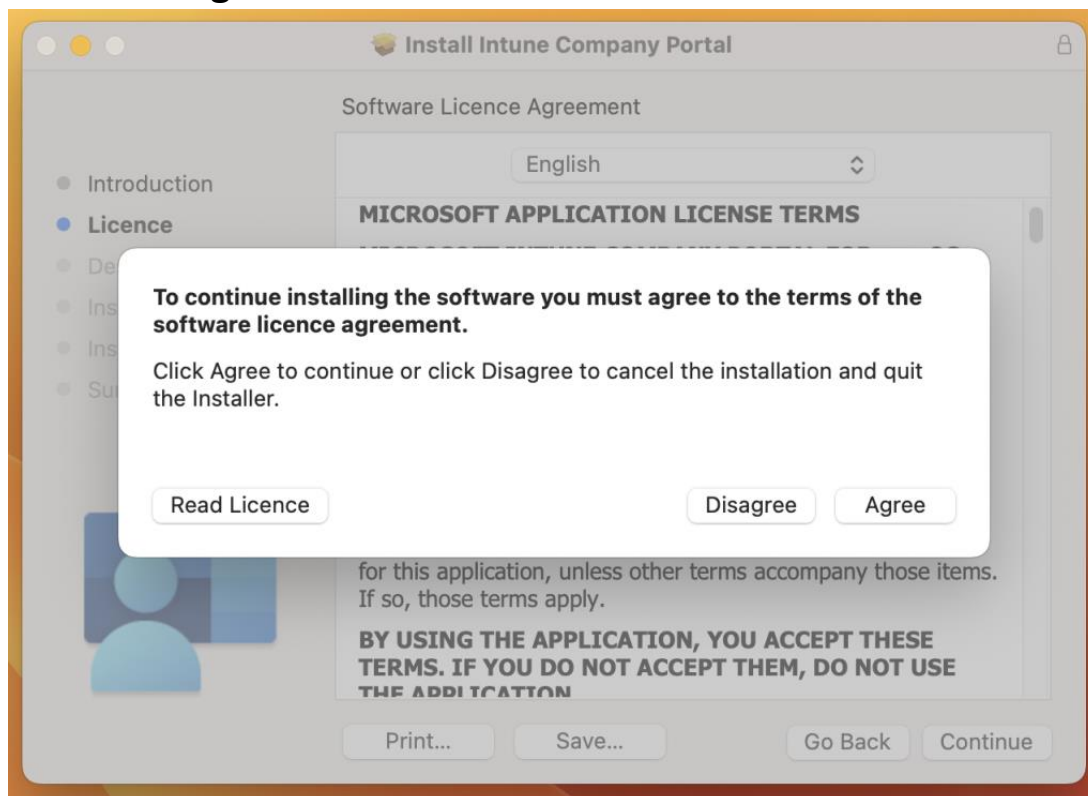




6. Select **Continue**.

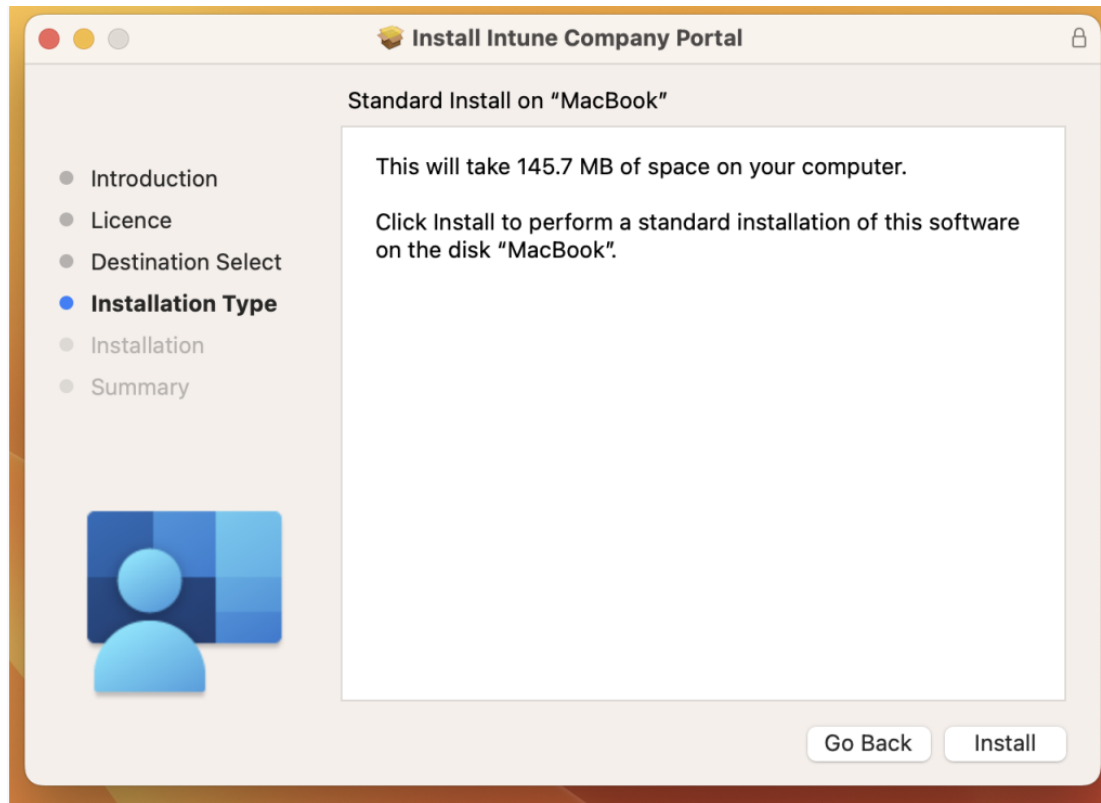


10. Select **Agree**.

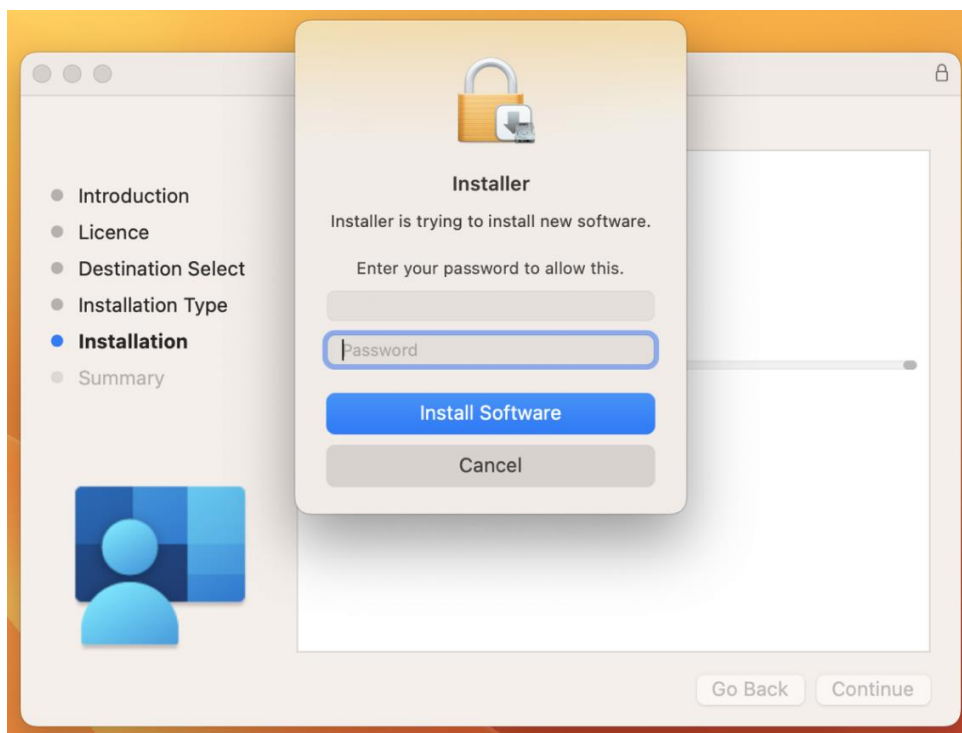




11. Select 'Install'.

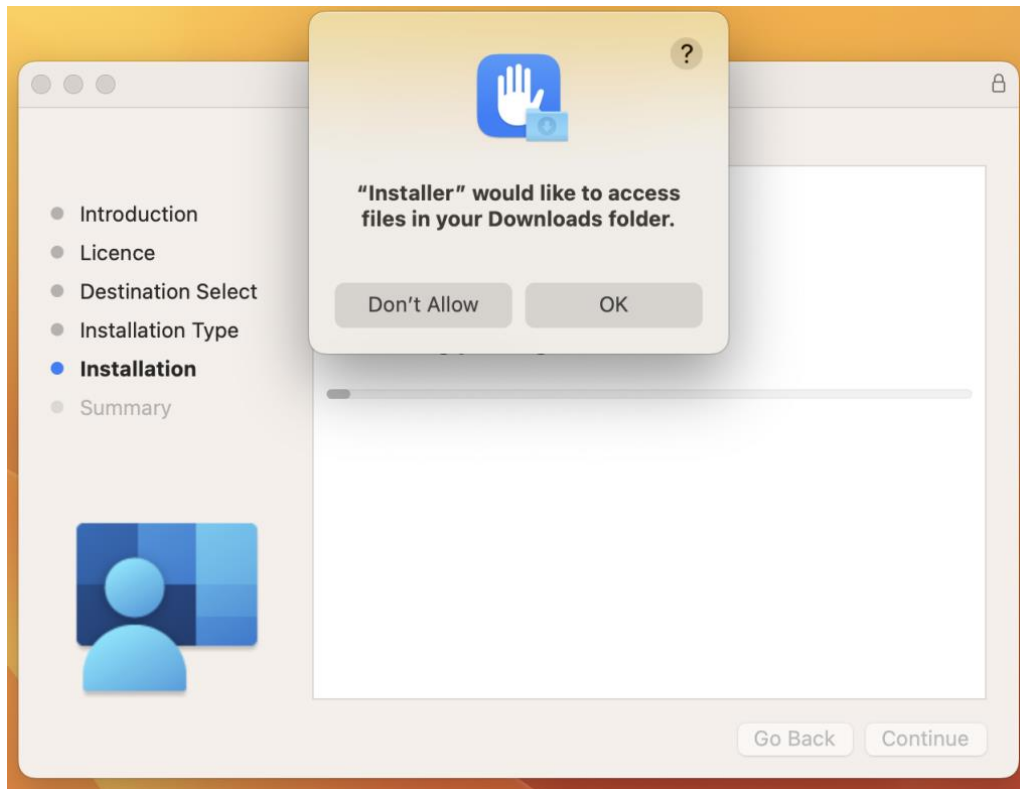


12. If required, please enter the **username** and **password** to your laptop.

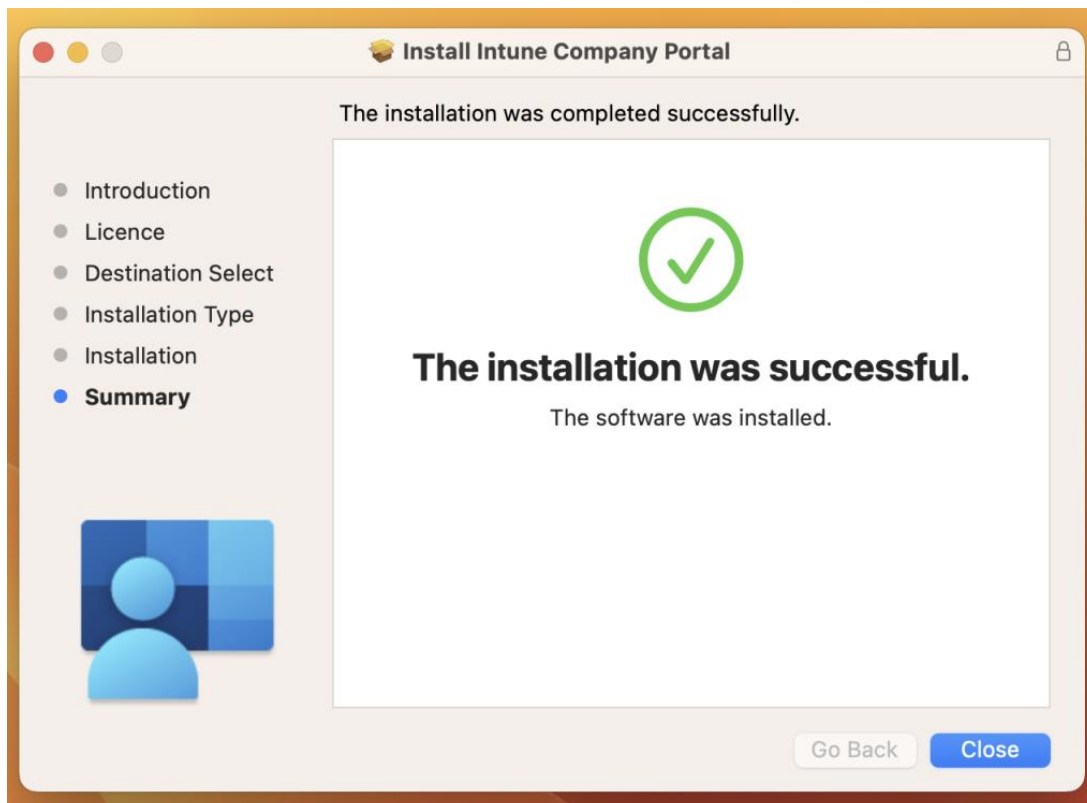




13. Select '**OK**' when prompted.

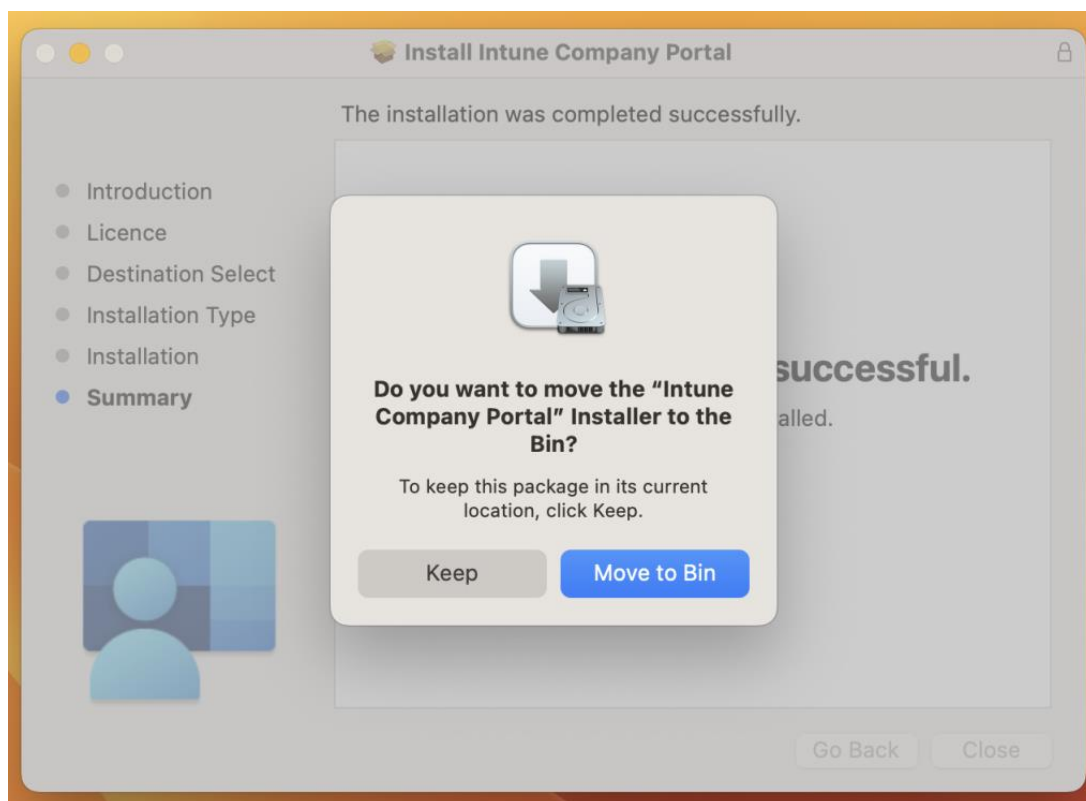


14. Once **completed**, select '**Close**'.





15. Select '**Move to Bin**' when prompted.



16. The application is now **installed**. To navigate to it, select **Launchpad** on the dock. Select your new application '**Company Portal**'.





Craigieburn Secondary College

RESPECT BELONGING GROWTH and UNDERSTANDING

17. Sign in with your **Craigieburn Secondary College email**.

Replace **username** with your student ID.

Microsoft Intune

Microsoft

Sign in

username@craigieburnsc.vic.edu.au

[Can't access your account?](#)

Next

Sign-in options

[Terms of use](#) [Privacy & cookies](#) ...

Cancel sign-in

username@craigieburnsc.vic.edu.au



Craigieburn Secondary College

RESPECT BELONGING GROWTH and UNDERSTANDING

18. Enter your **Craigieburn** password.

A screenshot of a web browser window showing the login page for Craigieburn Secondary College. The page has a dark blue background. In the center, there is a white box containing the college's logo, the email address 'aaa01@craigieburnsc.vic.edu.au', and the text 'Enter password'. Below the text is a password input field with dots. There is a 'Forgot my password' link and a 'Sign in' button. At the bottom of the white box, there is a 'Cancel sign-in' button. At the bottom of the browser window, there are links for 'Terms of use' and 'Privacy & cookies'.

19. Once **logged in**, you will be prompted with the following screen. Select '**Begin**'.

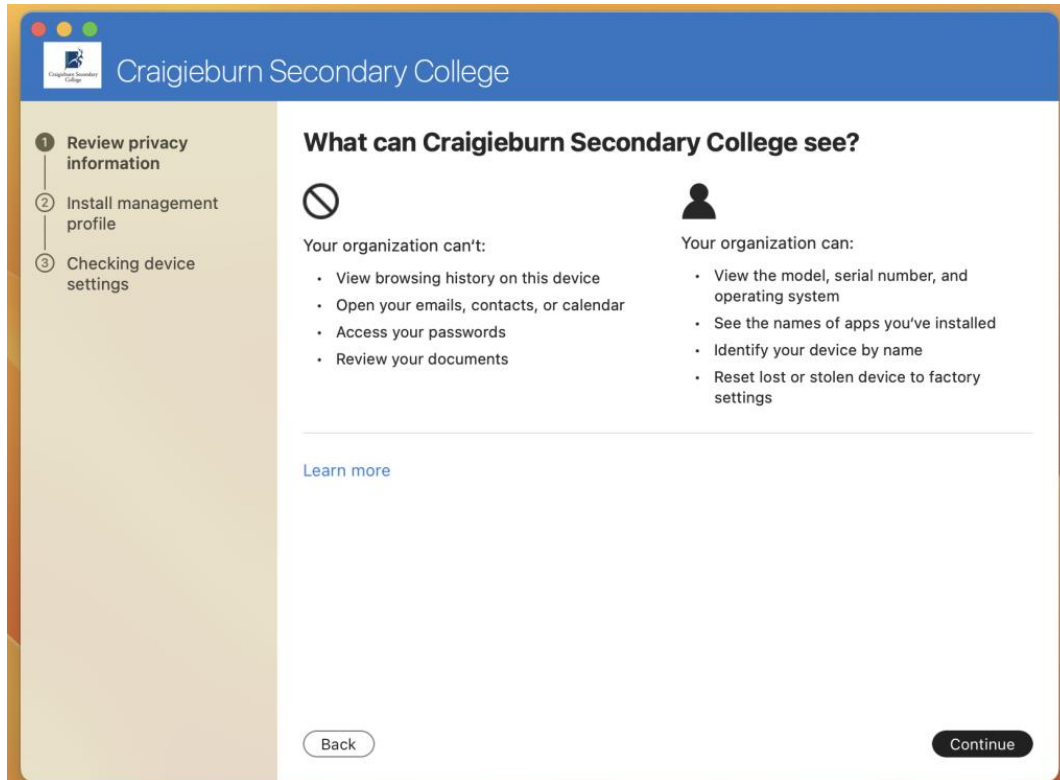
A screenshot of a web browser window showing the setup screen for Craigieburn Secondary College. The page has a blue header with the college's logo and name. On the left, there is a sidebar with three numbered steps: 1. Review privacy information, 2. Install management profile, and 3. Checking device settings. The main content area has the title 'Set up Craigieburn Secondary College access' and the text 'Set up your device to access your email, devices, Wi-Fi, and apps for work.' Below this text are two buttons: 'Begin' and 'Postpone'.



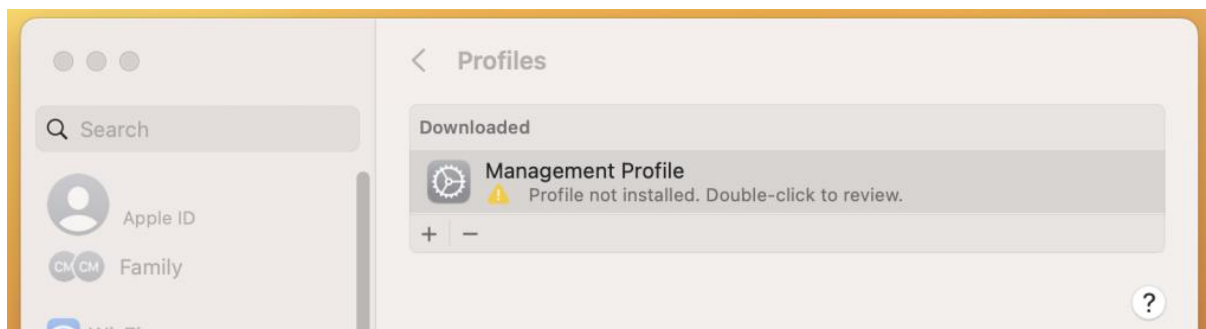
Craigieburn Secondary College

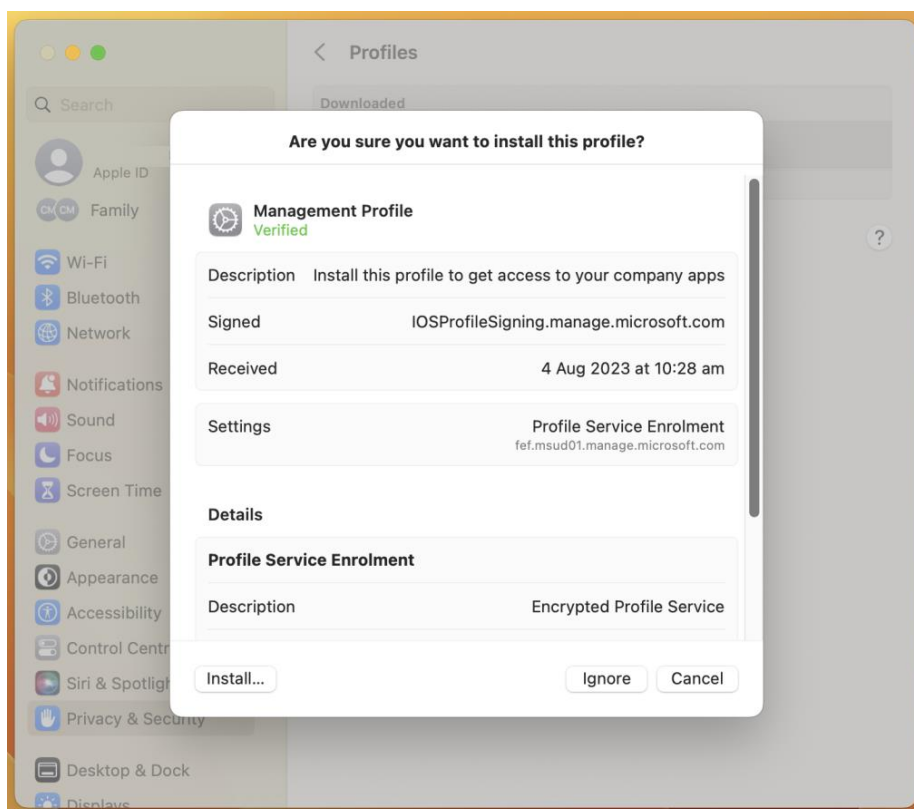
RESPECT BELONGING GROWTH and UNDERSTANDING

20. Select **Continue**.

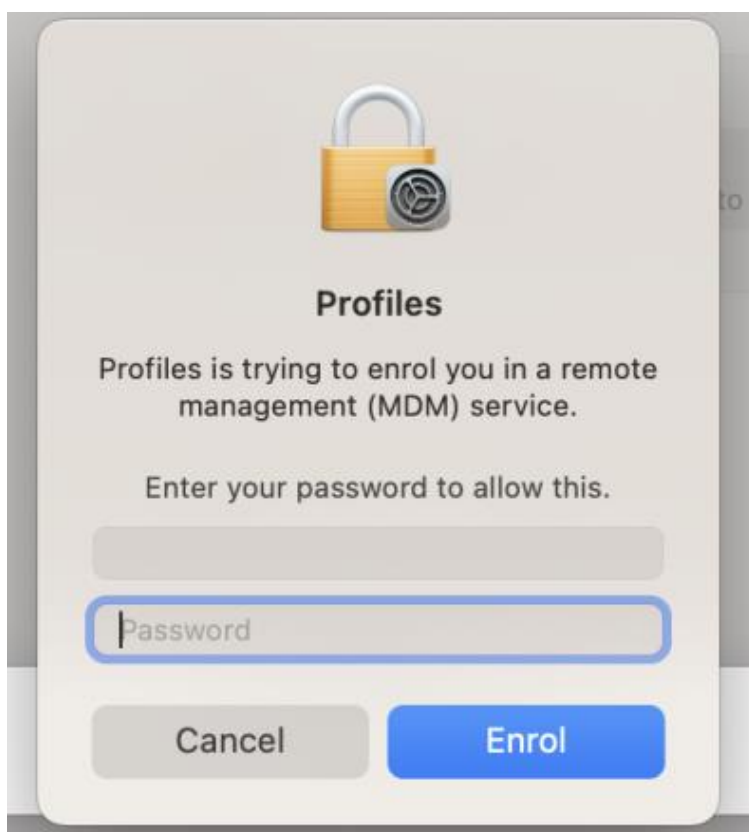


21. Select '**Download Profile**'. You will be prompted with the following menu. **Select the profile** and select **install**.





22. You may be prompted to enter your credentials. Please enter your **laptop username and password**.

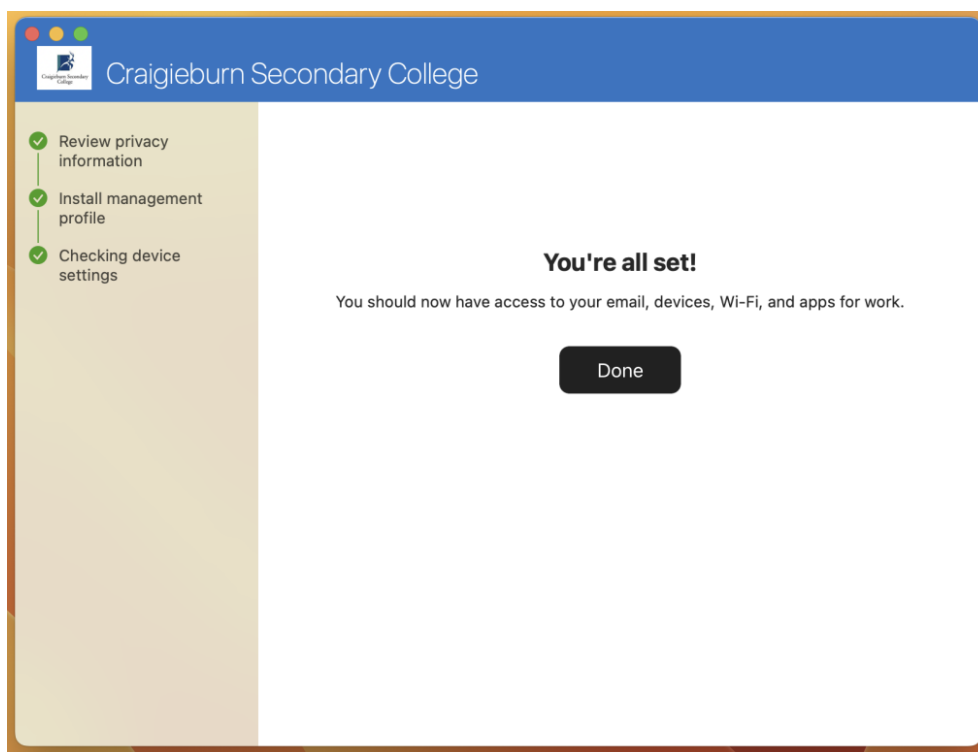




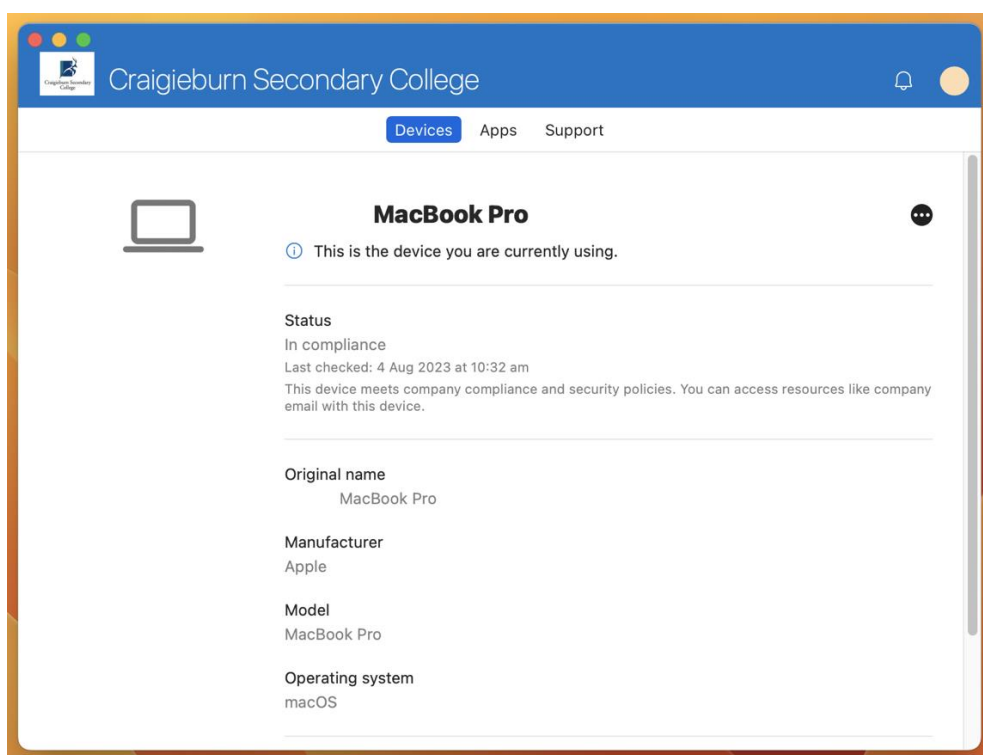
Craigieburn Secondary College

RESPECT BELONGING GROWTH and UNDERSTANDING

23. After you have **successfully** installed the profile, **return to company portal** and you will be prompted with this screen.



24. You are now successfully enrolled. You can view your device details in the following menu.





Craigieburn Secondary College

RESPECT BELONGING GROWTH and UNDERSTANDING

Once the app has finished your BYOD enrolment is complete.

Please allow 1 full school day before attempting to connect to school Wi-Fi, if after 1 full school day you cannot connect to the school network and access the internet, please visit IT and advise you have completed all steps of this enrolment guide.

The school WiFi network is called **eduSTAR_A**.

Enter your school **username** and **password** into the **username and password boxes** to login to school WiFi.